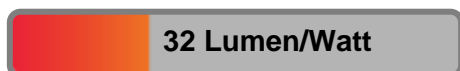


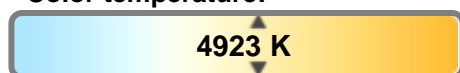
Light efficiency:



Light quality:



Color temperature:



Output: 10637 lm

Peak: 56118 cd

Power: 337 W

PF: 1.0



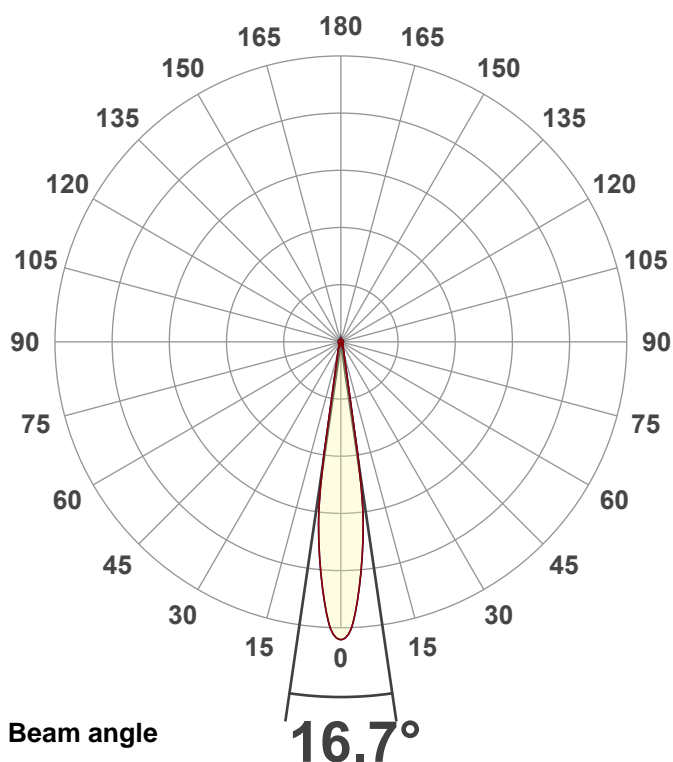
Product name:

Hydro Flex L7 (Zoom 50% 5000K)

Item number:

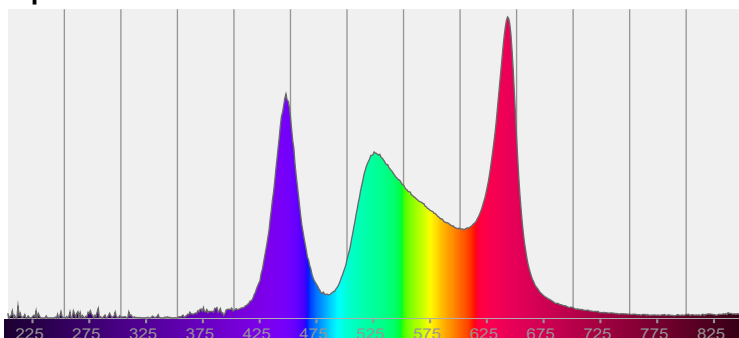
Date and time:

8/26/2025 8:50:33 AM

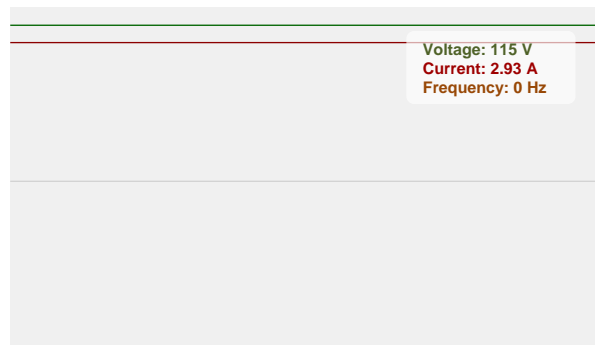


CIE 1931
x: 0.347
y: 0.350

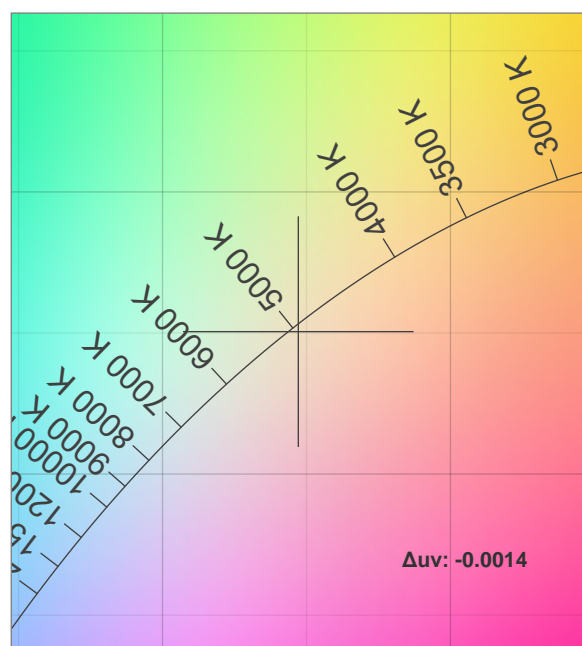
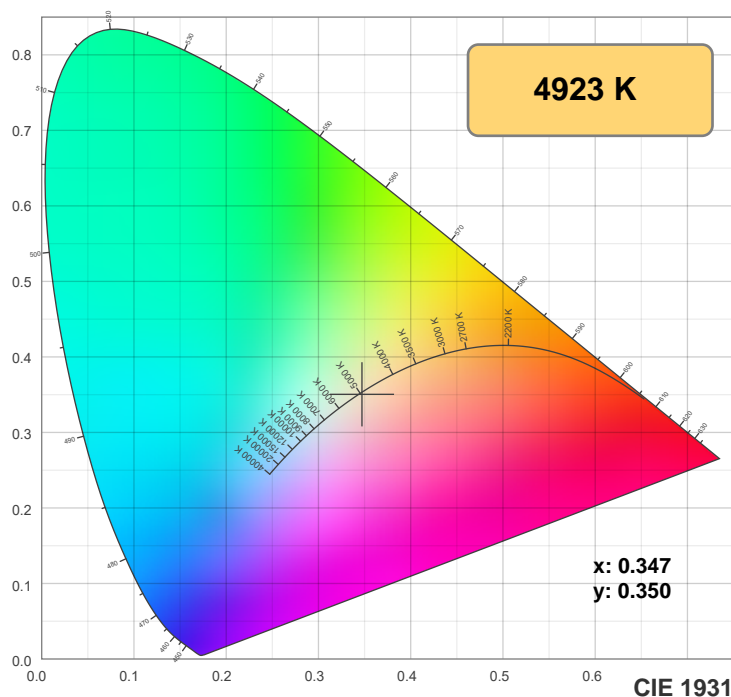
Spectra



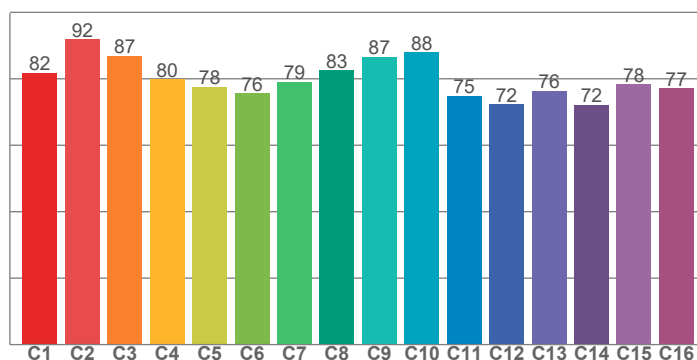
Power



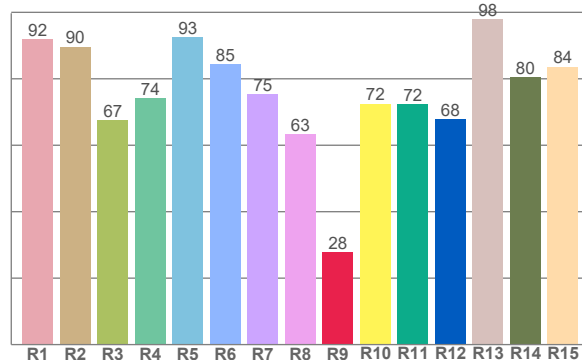
Color details



TM-30: 80.7



CRI: 79.9 (R1-R8)



CRI R values, only R1-R8 are used to calculate final CRI value

R1	R2	R3	R4	R5	R6	R7	R8	R9	R10	R11	R12	R13	R14	R15
92.0	89.7	67.5	74.2	92.6	84.5	75.3	63.3	27.8	72.5	72.4	67.8	98.0	80.5	83.6

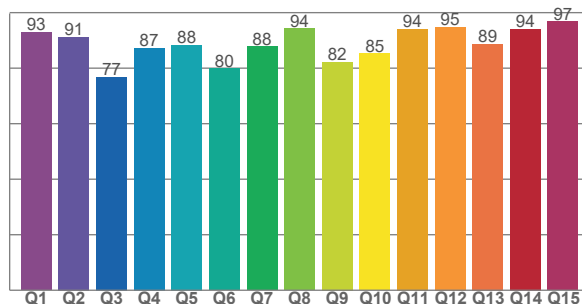
TM30 C values, 16 binned values out of total of 99 C values

C1	C2	C3	C4	C5	C6	C7	C8	C9	C10	C11	C12	C13	C14	C15	C16
81.8	91.9	87.0	79.9	77.6	75.7	79.1	82.6	86.6	87.9	74.8	72.4	76.4	72.2	78.3	77.1

CQS Q values

Q1	Q2	Q3	Q4	Q5	Q6	Q7	Q8	Q9	Q10	Q11	Q12	Q13	Q14	Q15
92.9	91.3	76.8	87.2	88.3	79.8	87.9	94.3	82.2	85.2	94.1	94.9	88.6	94.2	96.8

CQS: 87.6



Color parameters

Color temperature	Color rendering index	Red component	Color fidelity	Color gamut	Color quality scale	Color coordinate cie 1931	Color coordinate cie 1931	Color coordinate	Color coordinate	Color deviation from black body
CCT	CRI	CRI R9	TM30 Rf	TM30 Rg	CQS	x	y	u	v	Δuv
4923 K	79.9	27.8	80.7	113.4	87.6	0.347	0.350	0.213	0.323	-0.0014

TM-30 details

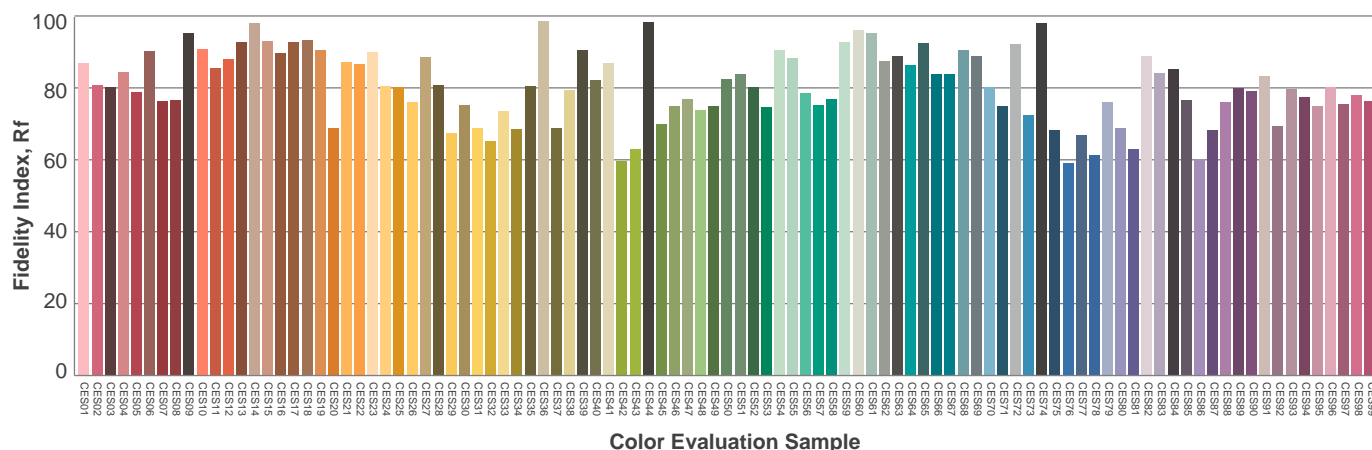
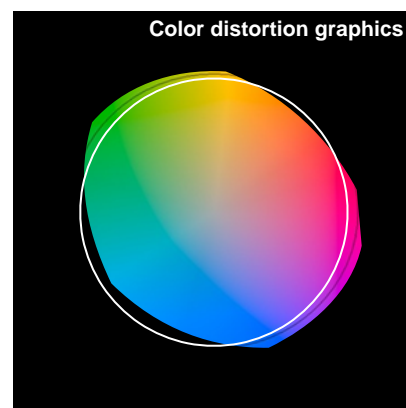
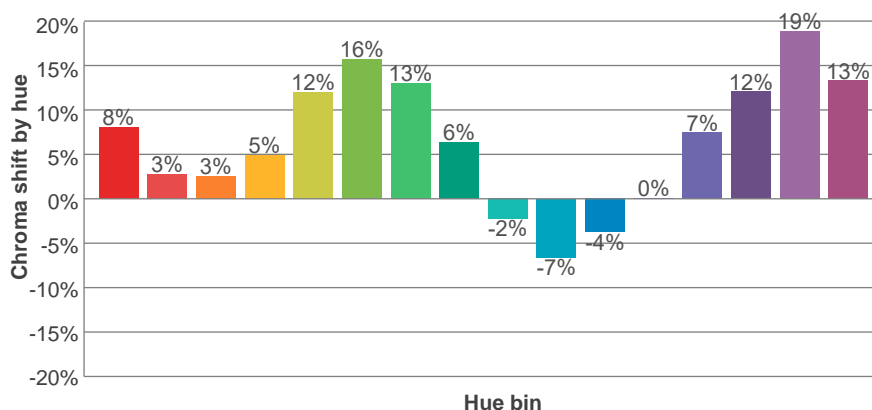
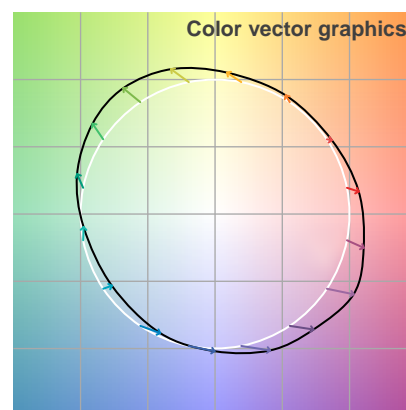
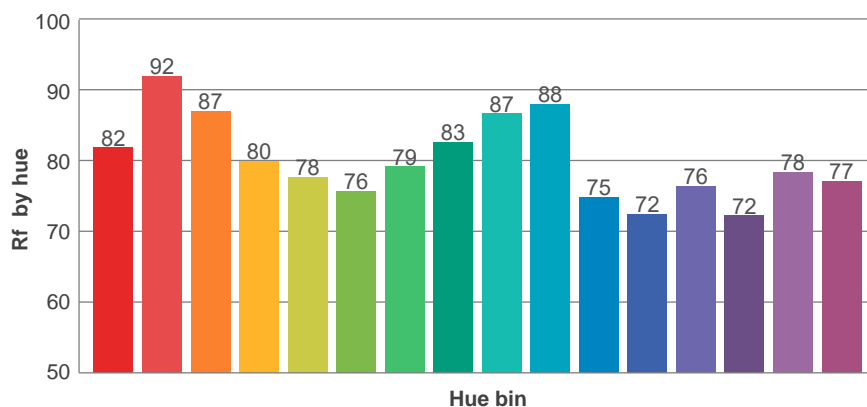
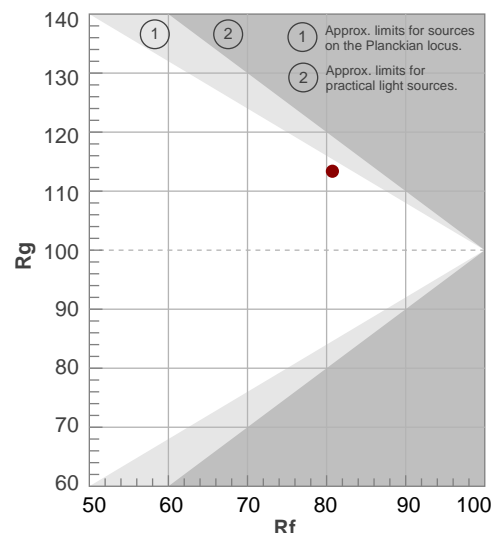
Rf 80.7

Fidelity index Rf

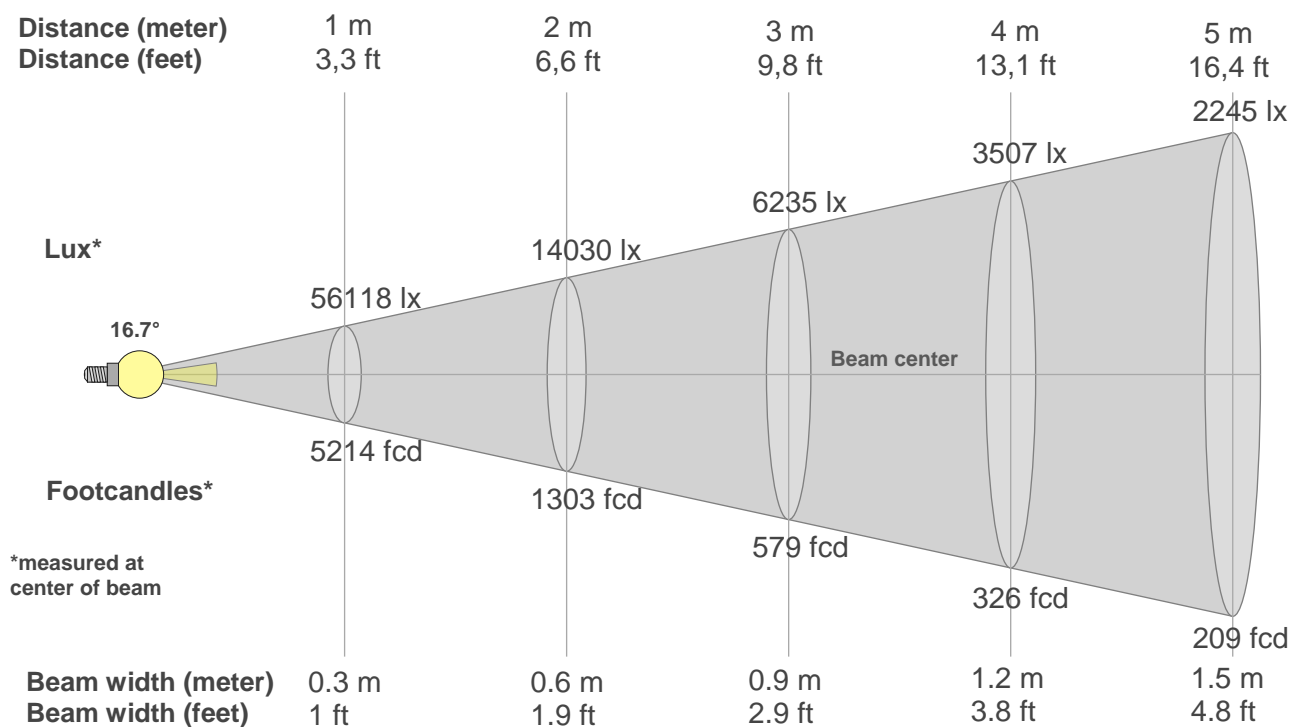
Rg 113.4

Gamut index Rg

Hue Bin	R _f	Shifts (%)	
		Chroma	Hue
1	82	8%	-4%
2	92	3%	-3%
3	87	3%	5%
4	80	5%	12%
5	78	12%	11%
6	76	16%	5%
7	79	13%	-5%
8	83	6%	-9%
9	87	-2%	-10%
10	88	-7%	2%
11	75	-4%	15%
12	72	0%	19%
13	76	7%	20%
14	72	12%	13%
15	78	19%	8%
16	77	13%	-3%



Beam details



Beam intensities from 1-20m

1m	2m	3m	4m	5m	6m	7m	8m	9m	10m	11m	12m	13m	14m	15m	16m	17m	18m	19m	20m
3.3ft	6.6ft	9.8ft	13.1ft	16.4ft	19.7ft	23ft	26.2ft	29.5ft	32.8ft	36.1ft	39.4ft	42.7ft	45.9ft	49.2ft	52.5ft	55.8ft	59.1ft	62.3ft	65.6ft
56118lx	14030lx	6235lx	3507lx	2245lx	1559lx	1145lx	877lx	693lx	561lx	464lx	390lx	332lx	286lx	249lx	219lx	194lx	173lx	155lx	140lx
5213.5fcd	1303.4fcd	579.3fcd	325.8fcd	208.5fcd	144.8fcd	106.4fcd	81.5fcd	64.4fcd	52.1fcd	43.1fcd	36.2fcd	30.8fcd	26.6fcd	23.2fcd	20.4fcd	18fcd	16.1fcd	14.4fcd	13fcd

Intensities in 0° c-plane

0°	1°	2°	3°	4°	5°	6°	7°	8°	9°	10°	11°	12°	13°	14°	15°	16°	17°	18°	19°
56.1k	56.1k	56.1k	53.0k	48.7k	44.4k	40.0k	35.7k	30.1k	23.9k	17.8k	11.6k	5.4k	3.3k	2.7k	2.1k	1.5k	0.9k	0.7k	0.7k
100%	100%	100%	94%	87%	79%	71%	64%	54%	43%	32%	21%	10%	6%	5%	4%	3%	2%	1%	1%

Intensities in 90° c-plane

0°	1°	2°	3°	4°	5°	6°	7°	8°	9°	10°	11°	12°	13°	14°	15°	16°	17°	18°	19°
56.1k	56.1k	56.1k	53.0k	48.7k	44.4k	40.0k	35.7k	30.1k	23.9k	17.8k	11.6k	5.4k	3.3k	2.7k	2.1k	1.5k	0.9k	0.7k	0.7k
100%	100%	100%	94%	87%	79%	71%	64%	54%	43%	32%	21%	10%	6%	5%	4%	3%	2%	1%	1%

Intensities in 180° c-plane

0°	1°	2°	3°	4°	5°	6°	7°	8°	9°	10°	11°	12°	13°	14°	15°	16°	17°	18°	19°
56.1k	56.1k	56.1k	53.0k	48.7k	44.4k	40.0k	35.7k	30.1k	23.9k	17.8k	11.6k	5.4k	3.3k	2.7k	2.1k	1.5k	0.9k	0.7k	0.7k
100%	100%	100%	94%	87%	79%	71%	64%	54%	43%	32%	21%	10%	6%	5%	4%	3%	2%	1%	1%

Intensities in 270° c-plane

0°	1°	2°	3°	4°	5°	6°	7°	8°	9°	10°	11°	12°	13°	14°	15°	16°	17°	18°	19°
56.1k	56.1k	56.1k	53.0k	48.7k	44.4k	40.0k	35.7k	30.1k	23.9k	17.8k	11.6k	5.4k	3.3k	2.7k	2.1k	1.5k	0.9k	0.7k	0.7k
100%	100%	100%	94%	87%	79%	71%	64%	54%	43%	32%	21%	10%	6%	5%	4%	3%	2%	1%	1%

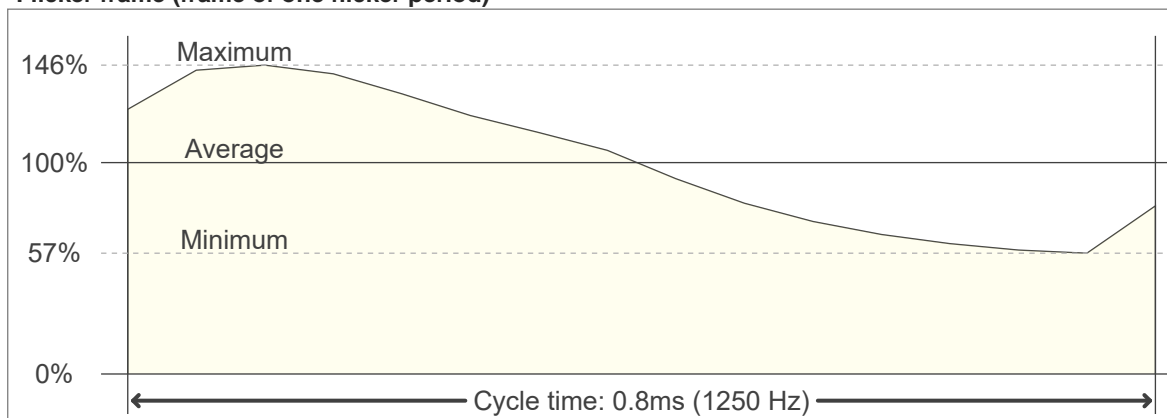
Beam angle 50%	Field angle 10%	Cutoff angle 2,5%	Intensity ratio in 120° cone	Intensity ratio in 90° cone
16.7°	23.9°	32.2°	54.4%	47.5%

Flicker

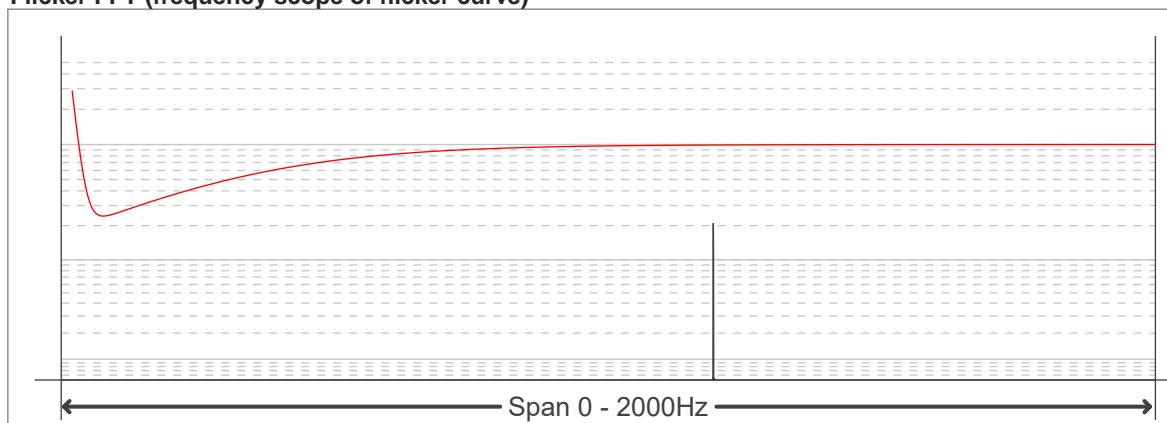
Flicker curve (complete sampled flicker signal)



Flicker frame (frame of one flicker period)



Flicker FFT (frequency scope of flicker curve)



Flicker results:

Flicker frequency:		1250 Hz	
Flicker index:	0.14	JA8/10 40Hz	0.36 %
Flicker percentage:	44.4 %	JA8/10 90Hz	0.69 %
SVM: (Visual flicker)	0.42	JA8/10 200Hz	1.49 %
PstLM	0	JA8/10 400Hz	3.05 %
Mp	0.14	JA8/10 1000Hz	10.21 %

Flicker conditions:

Sample rate:	20000 samples/second
--------------	----------------------